

ReaddleDocs 2.0

User's guide

© 2009 Readdle Inc.

Contents

Introduction

Copying files to ReaddleDocs

- Connecting ReaddleDocs as a shared network drive

- Using Readdle Storage to copy files from your computer to iPhone or iPod Touch

- Copying files from MobileMe iDisk to iPhone/iPod Touch

- Copying files from DAV supported web storage to iPhone/iPod Touch

- Downloading files from the Internet via built-in web-browser

- Saving files from Mobile Safari

Saving attachments to ReaddleDocs via Readdle Storage

Saving attachments to ReaddleDocs directly

Viewing and managing documents with ReaddleDocs

- Reading documents on the go

- Moving and deleting files

- Emailing documents that are stored inside ReaddleDocs

List of supported file formats

Settings

Introduction

ReaddleDocs is an advanced documents reader for your iPhone and iPod Touch. Besides opening any documents, it allows you to use your iPhone and iPod Touch as a flash drive from any Windows or Mac computers.

Copying files to ReaddleDocs

Connecting ReaddleDocs as a shared network drive

ReaddleDocs relies on a Wi-Fi network connection of any type to copy files between iPhone/iPod Touch and a computer.

ReaddleDocs uses WebDAV protocol to share its data with other computers via Wi-Fi Network. Most popular operating systems and many programs have the ability to mount WebDAV resource as a network drive.

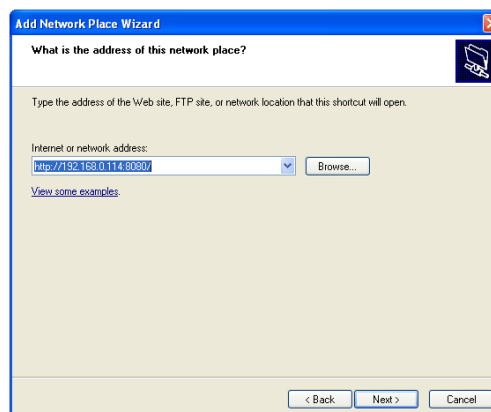
You need to know device IP address and port as well as login and password to access your device. Login and password are optional and can be configured on "Settings" tab inside ReaddleDocs.

For read-only access, you may also connect to ReaddleDocs with any modern web browser. Just type full URL like **http://192.168.1.16:8080** into address bar (replace 192.168.1.16 with IP address of your iPhone/iPod Touch).



Connecting ReaddleDocs to Windows XP

- 1 Open the **Start** menu and select **My Network Places**.
- 2 At the **Network Tasks** panel (you can find it on the left part of the window) click **Add a Network Place**. **Network Place Wizard** will be launched.
- 3 Click **"Next"** at the **Add Network Place Wizard** welcome screen.
- 4 Select **"Choose another network location"** and then click **"Next"**.
- 5 Type "http://" and ReaddleDocs IP address and port. This information is displayed on top of the **"Network"** tab on your iPhone/iPod Touch.



- 6 Enter the name for this new connection or leave a default one.
- 7 Press **Finish**. Please ensure that "Open this network place when I click Finish" is checked.

If you enabled password protection inside ReaddleDocs, you will be prompted to enter your username and password. Make sure you are entering username and password which are set in ReaddleDocs **"Settings"** tab. Also, please note that Windows XP may ask you to enter the password several times.

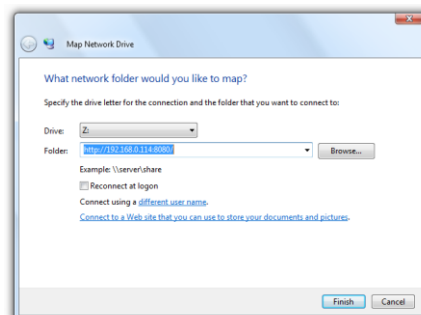
- 8 As a result you should get ReaddleDocs network drive mounted and ready to use:



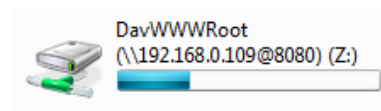
To reconnect to ReaddleDocs in the future, first make sure that ReaddleDocs is running. Open the **Start** menu and click **"My Network Places"**. Find the network drive under Network Locations and double-click it.

Connecting ReaddleDocs to Windows Vista/ Windows 7

- 1 Open the **Start** menu and select **Computer**
- 2 Click **Map network drive** at the toolbar on top of the **Computer** window.
- 3 Choose a drive letter in the drop-down menu.
- 4 Type "http://" and ReaddleDocs IP address and port. This information is displayed on top of the **"Network"** tab inside ReaddleDocs. Make sure the "Reconnect at login" box is unchecked.



- 5 If you enabled password protection inside ReaddleDocs, you will be prompted to enter your username and password. Make sure you are entering username and password which are set in ReaddleDocs **"Settings"** tab. Also, please note that Windows Vista/Windows 7 may ask you to enter the password several times.
- 6 As a result you should get ReaddleDocs network drive mounted and ready to use:



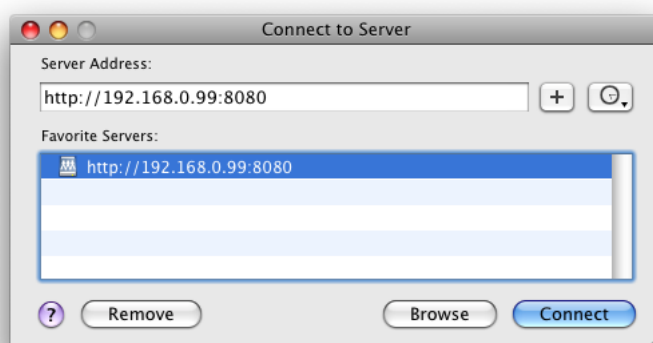
To reconnect to ReaddleDocs in the future, first make sure that ReaddleDocs is running. Open the **Start** menu and click **Computer**. Find the network drive under Network Locations and double-click it.

Enabling or changing your username and password for ReaddleDocs:

- 1 Open the Start menu and select Computer.
- 2 Find the ReaddleDocs network drive under Network Locations.
- 3 Right click on the ReaddleDocs network drive and select Disconnect.
- 4 Set up the drive again as described above.

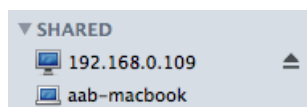
Connecting ReaddleDocs to Mac OS X 10.4 or later

- 1 Click on the Finder icon
- 2 Select the "Connect to Server..." item in the Go menu. You can use `⌘K` shortcut as well.
- 3 Type "http://" and ReaddleDocs server's IP address and port. This information is also displayed on the **"Network"** tab inside ReaddleDocs.
- 4 Press "Connect" button. You can also add the server to "Favorite Servers" list.



If you enabled password protection at ReaddleDocs, you will be prompted to enter your username and password. Make sure that you are entering username and password which are set in ReaddleDocs **"Settings"** tab.

- 5 As a result you should get Shared Disk mounted on your Mac:



You can also enable "Connected servers" setting at Finder Preferences→General to show it on the Desktop.

Using Readdle Storage to copy files from your computer to iPhone or iPod Touch

Readdle Storage is great when you don't have Wi-Fi connection but need to upload some files from any computer to your device. To upload files, follow these steps:

- 1 As a ReaddleDocs buyer, you are eligible to get free lifetime Readdle Storage account at <http://readdle.com/register/appstore>. Just choose the plan called "AppStore" when registering. This account will be used to store your documents securely.

Plan: You've selected **APPSTORE** plan.

This is the best free plan for users of ReaddleDocs application.

There are **512MB** of storage / **128** documents, all ReaddleDocs features are available.

Anytime later you may switch to other plan.

Login: [check](#)

Desired Readdle username. Only letters and numbers.

E-mail:

Mainly for password recovery and important news. No spam.

Your name:

Just to address you by name

Password:

Confirm:

At least 5 symbols. Both passwords should match. Use only letter and numbers, please.

☐ Remember my password on this computer

I agree to [Terms and Conditions](#) and [Privacy Policy](#)

[Register and start using Readdle](#)

- 2 After creating the account, go to Network tab inside ReaddleDocs, tap Add button, then tap Readdle Storage label and enter your login and password for Readdle Storage account. ReaddleDocs will catch your account and become able to get files stored online.

- 3 To upload files online, use any modern web browser on your computer. Navigate to <http://readdle.com> and log into Readdle Storage. You will see uploading interface, which is fast and easy to use.

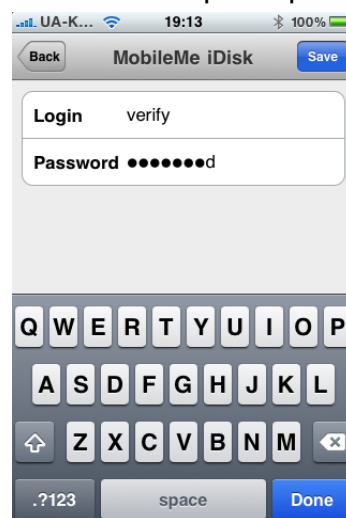


- 4 After you uploaded your files online, they become accessible via Network tab inside ReaddleDocs. Tapping on any of them will save the file locally to the device and open it for reading.

Copying files from MobileMe iDisk to iPhone/iPod Touch

For people who use MobileMe iDisk to store their files online, ReaddleDocs provides quick and handy access to the documents directly from their devices. Also, you can use iDisk to transfer files from the desktop computer or laptop to the iPhone.

- 1 After creating the MobileMe account, go to Network tab inside ReaddleDocs, tap MobileMe iDisk label and provide the application with your login and password for MobileMe account. ReaddleDocs will catch your account and become able to get files that you store online.
- 2 After you uploaded your files online, they become accessible via Network tab inside ReaddleDocs. Tapping on any of them will save the file locally to the device and opens it for reading.



Copying files from DAV supported web storage to iPhone/iPod Touch

If you use popular web storage services to make documents available from anywhere, ReaddleDocs provides handy access to your files directly from the iPhone and iPod Touch.

- 1 Go to Network tab inside ReaddleDocs, tap **Add - Other WebDAV Server** label and provide the application with your login, password, and your service WebDAV URL. For instance, Box.Net users will need to type `http://www.box.net/dav`
- 2 Once you added online storages, they become accessible via Network tab inside ReaddleDocs. Tapping on any of them will show the content stored online. To save the file locally to the device, tap its name.

Downloading files from the Internet via built-in web-browser

You can use built-in web browser to find and save files from the Web directly to your device.

- 1 Open **Browser** tab to start browsing the web
- 2 Browse the web until you navigate to the file you want to save on your device.
- 3 Press **Save** button on the toolbar.
- 4 Enter file name, choose destination folder and tap Done button.
- 5 Give ReaddleDocs a time to download a file.



NOTE 1: In case the website uses cookie-based authorization, you can visit it with built-in browser. Just enter your login and password and download a file.

NOTE 2: If the site uses HTTP-based authorization (usually displays browser dialog for entering username and password), you'll need to enter into the built-in browser special URL like:

```
http://username:password@site.com
```

where username - is your username, password - is your password, site.com - is the url of the site. Note the colon between username and password. It may seem to be a bit complicated (require typing URL with username and password), but it is the only option for ReaddleDocs now, due to limitations of Apple software components.

Saving files from Mobile Safari

You can also use MobileSafari to browse the web and ReaddleDocs to quickly save documents that you have found there.

To save file, change first part of URL in the address bar from "http://" to "rhttp://" (or "rhttp://username:password@" in case web site uses HTTP-based authorization), and press **Go**. ReaddleDocs will launch and try to download requested file.

Accessing device photos folder

ReaddleDocs allows user to access photos on your iPhone/iPod Touch. This way you will be able to open images transferred to your device via standard iTunes sync, as well as photos taken directly from iPhone camera.

Saving attachments to ReaddleDocs via Readdle Storage

ReaddleDocs relies on Readdle Storage web service to transfer attachments to your iPhone/iPod Touch.

Configuring ReaddleDocs to save attachments

- 1 Sign up for the free “AppStore” plan on Readdle Storage. You can do this at <http://readdle.com/register/appstore> . You will receive an email with account login, password and mail-in email address.
- 2 Go to **Network** tab, tap **Add – Readdle Storage**. Enter your Readdle Storage login and password, then tap **Done**.

NOTE: To change these settings, tap **Edit** and then your Readdle Storage account label.

Transferring mail attachments into ReaddleDocs

- 1 Forward the email with attachment to mail-in address for your Readdle Storage account. Your email will be processed within several minutes. ReaddleDocs creates “**Readdle Mail In**” contact in your Address Book, so you do not need to type your mail-in address.
- 2 Navigate to Readdle Storage via **Network** tab.
- 3 Tap the file you need to save. ReaddleDocs will download and open file.

NOTE: Downloaded file can be opened later even without active Internet connection

Saving attachments to ReaddleDocs directly

ReaddleDocs can retrieve attachments directly from your email account.

Configuring ReaddleDocs to save attachments

- 1 Go to **Attachments** tab and tap **Add**.
- 2 Choose the mail server you use.
- 3 Enter your account details for the service and tap **Save**.

Saving mail attachments into ReaddleDocs

- 1 Tap mail account label on the **Attachments** tab. ReaddleDocs will list mailbox contents from the server.
- 2 Navigate to email message with attachments and tap it. All attachments (including message itself) will be listed in the dialog.
- 3 Tap the attachment you want to save locally. ReaddleDocs will download and open the file. Afterwards, you do not need Internet connection to open this file.



Viewing and managing documents with ReaddleDocs

After you have transferred PDF or other documents to your iPhone, there are several possible scenarios of what you can do with your documents:

- Read documents on the go
- Manage files stored inside ReaddleDocs
- Email files directly from ReaddleDocs

Reading documents on the go

You can view and manage all documents stored inside ReaddleDocs via **Documents** tab inside the application.





To start reading a document, tap its name. After file is loaded, you will see document reading screen.

NOTE: ReaddleDocs opens PDF documents with some controls that may be a bit different from those used for other documents.


To show/hide reading controls, tap anywhere on the screen.



In document reading mode:

To	Do this
Zoom document	Use standard two-finger iPhone pinch gesture
Search within the document	Tap  . Search dialog pops to enter keyword
Navigate via PDF outline/bookmarks	Tap  . Navigate through outline structure or bookmarks, tap the title you need to jump to.
Create bookmark	Tap the screen to show controls. Then tap  , enter bookmark name and tap Save.
Email document	Tap  and choose "Send by email" action. The dialog pops to edit your message.

Jump to specific page

Tap  and then Go to page. Navigation dialog will appear. Enter page number into edit box on top of the screen and tap Go To.

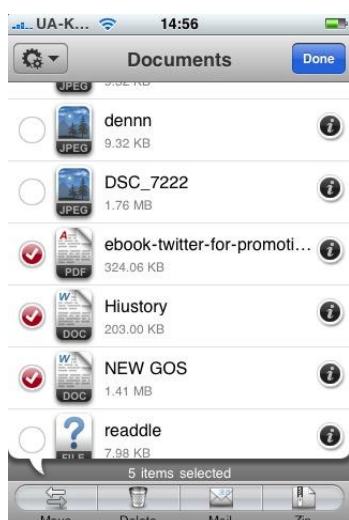
Fast scroll large documents

Use slider on the right part of the screen.

Moving and deleting files

To manage files stored inside ReaddleDocs:

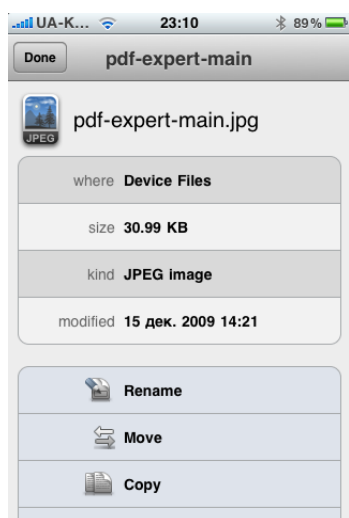
- 1 While you are viewing folder content on the **Documents** tab inside ReaddleDocs, tap **Edit** in top right corner.
- 2 Mark files and folders you want to manage from your device and press appropriate button in the bottom of the screen. You can also create empty folder using top left button.



NOTE: When you are deleting a folder, all its files and subfolders will be deleted as well.

To operate with particular file or folder

Tap disclosure indicator to open file details.



To	Do this
Rename document	Tap Rename, enter new name for the file or folder
Move file	Tap Move and choose destination folder
Copy file	Tap Copy and choose destination folder
Delete document	Tap Delete.
Email without opening	Tap Email. The dialog will pop up to edit message.
Compress file/folder	Tap Zip. Compressed files will be placed into the same folder.

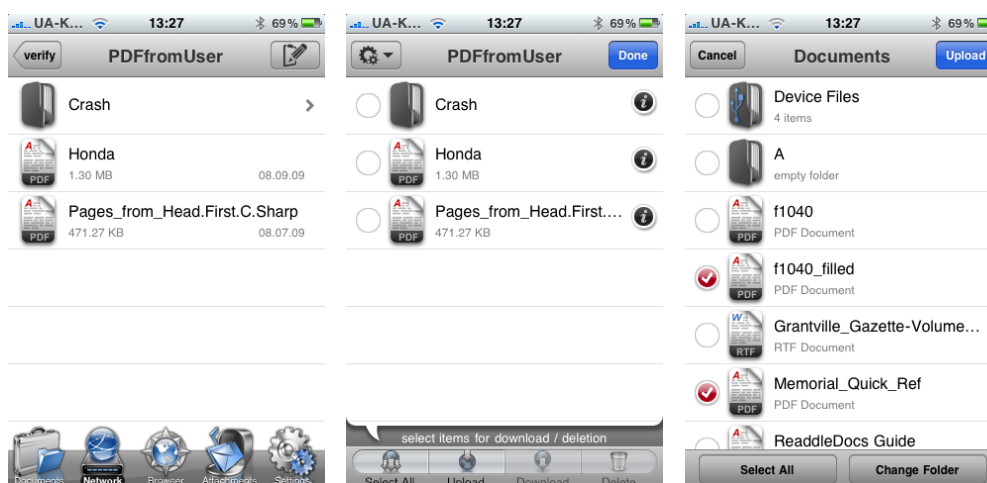
Emailing documents that are stored inside ReaddleDocs

- 1 To email document you are reading at the moment, tap “Actions” button and then “Send by e-mail”. Mail dialog will pop up.
- 2 Enter your e-mail address to the “From” field. This is the address that your recipient will reply to.
- 3 Enter your recipient e-mail address. You can also fill this field with any contact from your address book.
- 4 Enter e-mail body text and tap Send.

Uploading documents from ReaddleDocs to iDisk or any other WebDAV storage

Files that are stored on iPhone/iPod Touch can be uploaded to MobileMe iDisk or other WebDAV storage directly from ReaddleDocs.

To upload files/folders to online storage, follow the steps below



1. From the «Network» tab choose your online storage and open its contents. Tap button in top right corner to open action menu

3. Mark files and folders you want to store online. Then tap «Upload» button in top right corner to upload.

NOTE: File actions will not be shown for read-only storages.

List of supported file formats

ReaddleDocs supports following document formats for viewing:

- Microsoft Office: Word, Excel, Powerpoint (.doc/.docx, .xls/.xlsx, .ppt/.pptx)
- Apple iWorks including iWorks '09: Pages, Numbers, Keynote (.pages, .keynote, .numbers).
- Portable document format (.PDF)
- Web pages (.html, .htm)
- Rich text documents (.rtf, rtf^{new})
- Text files (.txt)
- Fiction book (.fb2)
- Plucker e-books (.pdb)
- Images (.jpeg, .jpg, .gif, .png, .tiff)
- **NEW** Media formats (mp3, mp4, 3gp, mov, mpv)

NOTE: ReaddleDocs can also be used to store and carry files of any other type without opening them. This turns your iPhone/iPod Touch into a wireless flash drive

Settings

Settings allow you to customize your application, configure Wi-Fi network drive parameters, document viewing, security and other preferences for ReaddleDocs.

Passkey Lock

Passkey allows you to protect documents from being viewed by other person. Once set, the application will ask the passkey on each launch.

NOTE: To set password for wireless access to ReaddleDocs, use Wi-Fi Network Drive section.

ATTENTION! There is no way to recover your files if you forget the passkey.

Wi-Fi Drive

Wi-Fi Drive almost turns ReaddleDocs into portable flash drive. The only difference is that you need active Wi-Fi connection to transfer files from your computer to the iPhone or iPod Touch.

This feature is based on WebDAV protocol and is compatible with both Windows and Mac.

Enable Drive

- Turn WiFi access to your files on or off.

Ask For Password

- Enable or disable password protection for WiFi access to your files

Public Folder

- Enables public folder that can be accessed without password

NOTE: Password configured here is for Wi-Fi connections only. To protect your documents from being viewed directly on the iPhone, use **Paskey Lock** feature.

Downloads

This section allows you to choose folder to store files downloaded via embedded browser.

Viewers

ReaddleDocs contains several viewing engines for different file formats. This section allows you to configure preferred ones depending on the documents you read more.

View PDF in

- Choose either you want simpler iPhone OS native viewer or Readdle's own PDF rendering viewer that supports larger files, PDF outline, bookmarks and more.

View text files in

- Enable Readdle BookReader engine if you read books in txt format.

BookReader Settings

- Configure font type and size for reading books.

Auto-open

In this section, you can enable or disable immediate opening files on ReaddleDocs startup and after downloading them from the web.

Support

This section allows you to contact Readdle team in case you have any questions or suggestions. In case you have some issue with the app, please enable Verbose logging, then reproduce the problem and contact us via Support dialog. Diagnostic log will be sent to us so that we could assist you faster.